



**Klausz Dental  
Laboratories Ltd.**

klauszdl@istar.ca  
www.klauszdentallab.com

*"Working Harder And Smarter For Your Practice"*

40 Kodiak Crescent, Units 11-12 Toronto  
ON Canada M3J 3G5  
Toll Free: 1-800-410-4392  
Local: (416) 630-6262

Quality | Technology | Innovation

May 2010

**An O.I.C. Specialty Laboratory**  
*Occlusion - Implants - Cosmetics*



T&S Certified Lab

**ATLANTIS™**

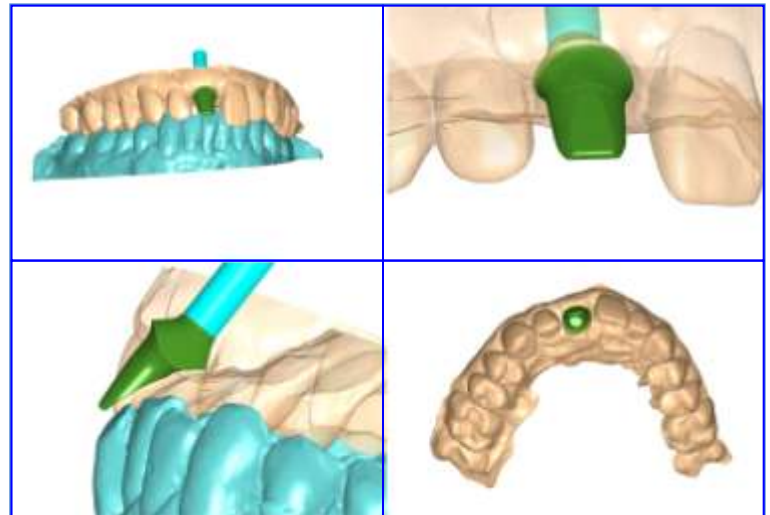
**Patient-specific abutments for  
optimal esthetic outcomes**



At Klausz Dental Laboratories, we are always on the look out for new and exciting materials and restorations, which are backed with clinical success and guaranteed with outstanding warranties.

**ATLANTIS™** Patient Specific CAD/CAM Milled Abutments fit the bill.

No two implant patients are alike —so why should their abutments be? Available for all major implant systems and in the materials you want, titanium, gold-shaded titanium or zirconia, Atlantis™ patient-specific abutments are designed to replicate natural prepared teeth, making implant treatment as simple and predictable as traditional crown and bridge dentistry. Eliminate the need to inventory parts. Just take an implant-level impression and send it to us. Uniquely designed from the final tooth shape, Atlantis™ abutments provide optimized esthetics and function.



Whether you are using:

- Astratech    BioHorizons
- Biomet 3i    Keystone Dental
- Nobel Biocare    Straumann
- Zimmer Dental



Atlantis™ offers a great solution for cement-retained implant prosthetics.

**Looking to the future of implant dentistry-  
just another way we're working warder and smarter for your practice!**

This is an abridged version of our e-mail newsletter. It does not contain all the articles and promotions that are available in our complete e-Newsletter. To start receiving our e-Newsletter, simply send a request to us at [klauszdl@istar.ca](mailto:klauszdl@istar.ca)